



# Excelerator

Data Collection Software

*Introducing Excelerator, a powerful, easy to use, and cost effective software solution designed to collect data from any Doran Scale and transfer it to a Microsoft Excel spreadsheet. The Doran Excelerator Data Collection Software gives you the power to accelerate your data collection.*

*Automate your data collection and remove the risk of human error with the easy to use Doran Excelerator Data Collection Software.*

## **Flexible Communication and Data Formatting**

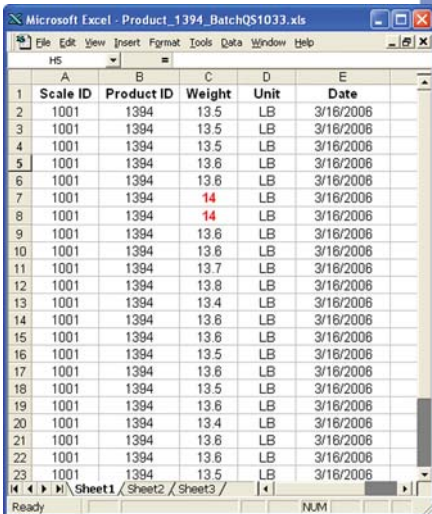
Whether it's one Doran Scale connected to a PC, or up to 20 Doran Scales installed throughout your plant, the Excelerator can handle it all. Streaming data from the scale can be sent to the PC via a local RS232 or USB port, or across a wired or wireless Ethernet network. You can even harness the power of the Internet by remotely collecting data from scales on the other side of the world!

Scale data can be formatted for your custom spreadsheet design using the Data Formatting and Main Control Windows. From the Main Control Window, you can select the scale source as well as the location the data appears on an Excel spreadsheet. Predefined fields such as units, time, and date can be inserted into the column of your choice, or simplify the collected data by activating only the fields that are important to your application. All these modifications are easily accomplished from dropdown boxes and easy to understand menus.

The Advanced Mode can import user defined data strings such as Product ID, User ID, or Checkweigh Status. These data fields can be easily defined in Excelerator and inserted into the spreadsheet in addition to basic weight data. Formatting of custom data strings on all Doran Excel series scales is a snap with the "Excelerator Analyze Feature". Open the Analyze data formatting window and add data fields of any print string. The Excelerator's visual interface makes this process easy with drag and drop simplicity.

## **A Powerful Data Tool at Your Fingertips**

Now data can be moved to where decisions need to be made at a management level in real-time. Once imported into Excel, the real-time data can be manipulated to show Averages, Standard Deviation, Accumulated Totals, Charts and Graphs updated as the data is being collected. The Excelerator Software turns simple weight information into a valuable management tool to analyze and control any process.



	A	B	C	D	E
	Scale ID	Product ID	Weight	Unit	Date
1	1001	1394	13.5	LB	3/16/2006
2	1001	1394	13.5	LB	3/16/2006
3	1001	1394	13.5	LB	3/16/2006
4	1001	1394	13.5	LB	3/16/2006
5	1001	1394	13.6	LB	3/16/2006
6	1001	1394	13.6	LB	3/16/2006
7	1001	1394	14	LB	3/16/2006
8	1001	1394	14	LB	3/16/2006
9	1001	1394	13.6	LB	3/16/2006
10	1001	1394	13.6	LB	3/16/2006
11	1001	1394	13.7	LB	3/16/2006
12	1001	1394	13.8	LB	3/16/2006
13	1001	1394	13.4	LB	3/16/2006
14	1001	1394	13.8	LB	3/16/2006
15	1001	1394	13.6	LB	3/16/2006
16	1001	1394	13.5	LB	3/16/2006
17	1001	1394	13.6	LB	3/16/2006
18	1001	1394	13.5	LB	3/16/2006
19	1001	1394	13.6	LB	3/16/2006
20	1001	1394	13.4	LB	3/16/2006
21	1001	1394	13.6	LB	3/16/2006
22	1001	1394	13.6	LB	3/16/2006
23	1001	1394	13.5	LB	3/16/2006

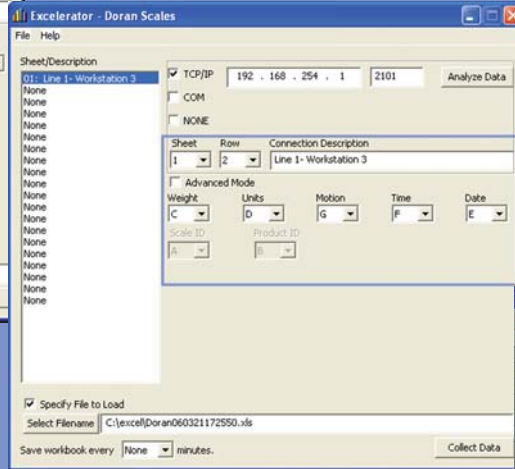
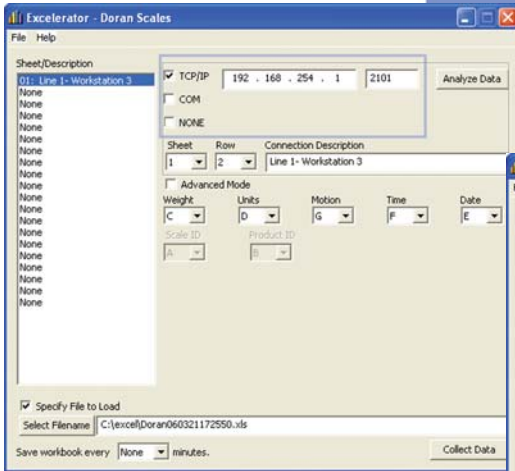
*With Excelerator, critical data will jump to life. This example shows a product weight in red that was beyond the acceptable weight tolerance.*

## Easy to Use

Once configured, you can begin collecting data into Microsoft Excel in just two mouse clicks, it's really that simple! By designing the Exceleator program to work seamlessly with Doran Scales, and relying on a visual interface that eliminates custom programming, initial setup time is measured in minutes, not hours like many other data collection programs.

The following screenshots illustrates how fast and easy it is to begin collecting data with the Exceleator Data Collection Software.

*Choose the communication method, TCP/IP or the local COM port.*



*Format the data to suit your particular needs.*

*Watch as the data is automatically inserted into an Excel spreadsheet.*

	A	B	C	D	E	F	G
1	Scale ID	Product ID	Weight	Unit	Date	Time	Motion
2	110	630705	1.34	lb	3/21/2006	17:51:33	Stable
3	110	630705	1.34	lb	3/21/2006	17:51:37	Stable
4	110	630705	1.34	lb	3/21/2006	17:51:41	Stable
5	110	630705	1.34	lb	3/21/2006	17:51:44	Stable
6	110	630705	1.34	lb	3/21/2006	17:51:47	Stable
7	110	630705	1.54	lb	3/21/2006	17:52:00	Stable
8	110	630705	1.54	lb	3/21/2006	17:52:06	Stable
9	110	630705	1.52	lb	3/21/2006	17:52:10	Stable
10	110	630705	1.52	lb	3/21/2006	17:52:15	Stable
11	110	630705	1.52	lb	3/21/2006	17:52:20	Stable
12	110	630705	1.52	lb	3/21/2006	17:52:25	Stable
13	110	630705	1.34	lb	3/21/2006	17:52:30	Stable
14	110	630705	1.34	lb	3/21/2006	17:52:34	Stable
15	110	630705	1.34	lb	3/21/2006	17:52:37	Stable
16	110	630705	1.34	lb	3/21/2006	17:52:41	Stable
17	110	630705	1.34	lb	3/21/2006	17:52:45	Stable
18	110	630705	1.34	lb	3/21/2006	17:52:49	Stable
19	110	630705	1.52	lb	3/21/2006	17:52:54	Stable
20	110	630705	1.52	lb	3/21/2006	17:52:58	Stable
21	110	630705	1.52	lb	3/21/2006	17:53:01	Stable
22	110	630705	1.52	lb	3/21/2006	17:53:05	Stable
23	110	630705	1.52	lb	3/21/2006	17:53:10	Stable
24	110	630705	1.52	lb	3/21/2006	17:53:15	Stable
25	110	630705	1.52	lb	3/21/2006	17:53:27	Stable

## Take the Exceleator for a Test Drive!

Get behind the wheel of the Exceleator and experience first hand the ease of use of the Exceleator Data Collection Software by downloading the **15-Day Free Demo**. This demo version of the program is a **fully functioning copy**, so you can explore all the features of the program and see how easy it is to use. Go to: <http://www.doranscales.com/exceleator/Exceleator.msi>

### Minimum System Requirements:

- 133MHz or faster processor
- 64 Mb of RAM
- CD-ROM Drive
- Minimum 20Mb of available hard drive space.
- Windows 2000 Operating System
- Microsoft Excel Version 97
- One available RS232 serial communication port.
- Data collection using TCP/IP requires Ethernet network that supports the TCP/IP protocol.

## Doran Scales, Inc.

1315 Paramount Pkwy • Batavia, IL 60510  
1-800-262-6844 • Fax 630-879-0073  
[www.doranscales.com](http://www.doranscales.com)